

**EXPLANATION OF LEGEND ITEMS**

**Roads Open to Highway Legal Vehicles Only:**

These roads are open only to motor vehicles licensed under State law for general operation on all public roads within the State.

**Roads Open to All Vehicles:**

These roads are open to all motor vehicles, including smaller off-highway vehicles that may not be licensed for highway use (but not to oversize or overweight vehicles under State traffic law).

**Trails Open to All Vehicles:**

These trails are open to all motor vehicles, including both highway legal and nonhighway legal vehicles.

**Seasonal Designation:**

This symbol, used in conjunction with one of the other road or trail symbols, indicates that the road or trail is open only during certain portions of the year. Refer to the Seasonal and Special Designation Table for further instructions.

**Other Public Roads and Trails:**

Highways, U.S., State  
Other Public Roads

These symbols are used to show routes the Forest Service does not have jurisdiction over and has not designated for motorized use. These symbols are part of the reference layers showing connections to towns and cities outside the forest boundary.

**Short Route Identifier:**

This symbol is used for routes that are too short to show an actual symbol type on the map. The symbol contains the number of the road or trail. Users should refer to the corresponding number in the Short Route Table for designation information.

**Legend**

- Roads Open to Highway Legal Vehicles
- Roads Open to All Vehicles
- Trails Open to All Vehicles
- Seasonal Designation (See Table)
- Highways, U.S., State
- Other Public Roads
- Forest or Unit Boundary
- National Forest System Lands
- Non-National Forest System Lands within the National Forest
- WILDERNESS AREAS
- Large Lakes and Rivers
- 70333 ● Short Route Identifier (See Table)
- Information Site

0 1 2 4 Miles

North American Datum of 1983 (NAD 83)  
Universal Transverse Mercator, zone 10

**MAP INDEX**

On this side:  
**Map 1b**  
On reverse side:  
Map 1a

**VICINITY MAP**

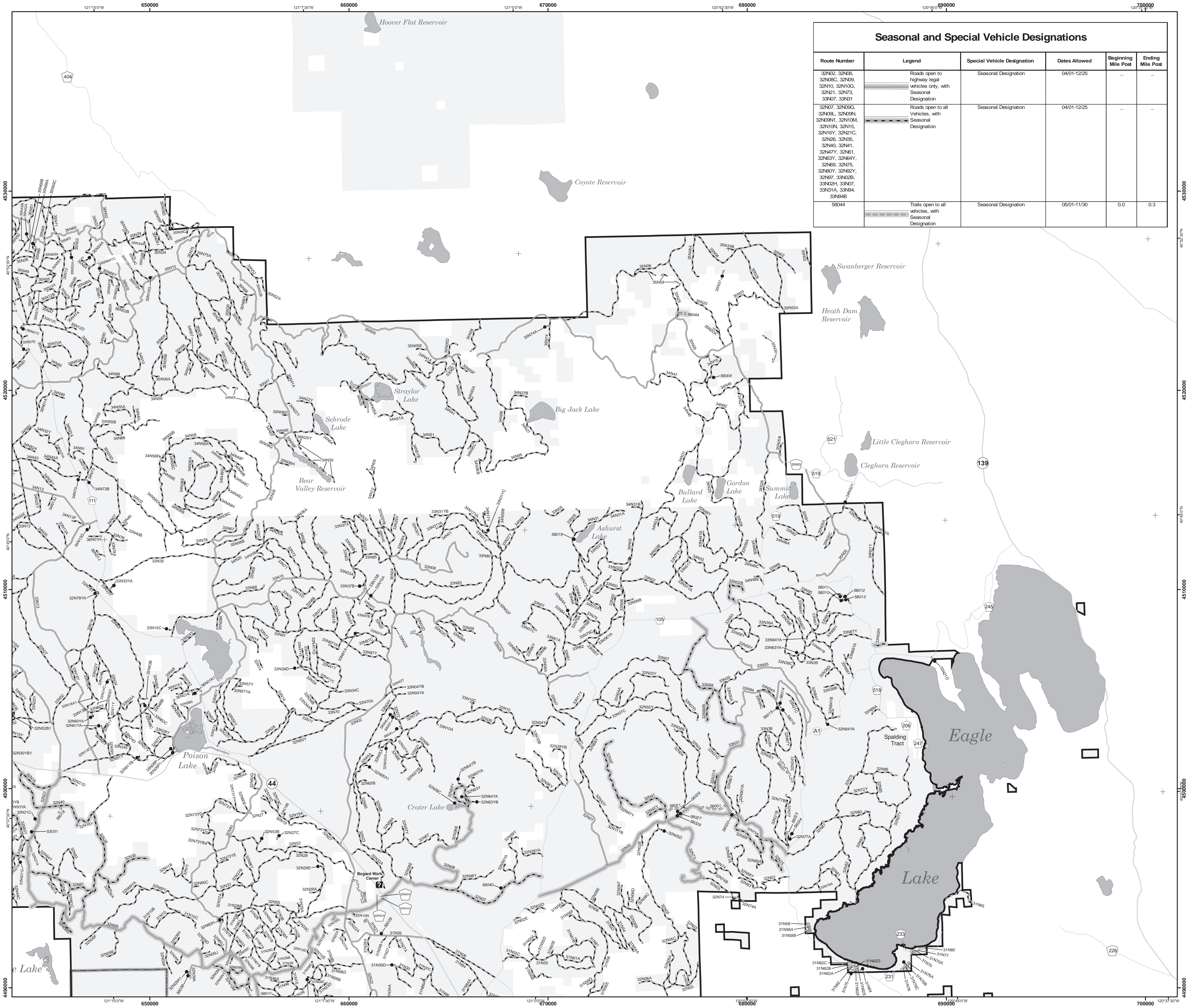


**Motor Vehicle Use Map**  
Lassen National Forest

California 2010



Short Route Table			Short Route Table		
Route	Designation	Length (miles)	Route	Designation	Length (miles)
31N30D	Road open to all vehicles	0.08	33N63YA	Road open to all vehicles	0.18
31N64	Road open to highway legal vehicles only	0.10	33N81A	Road open to all vehicles	0.14
31N75	Road open to highway legal vehicles only	0.10	33N84A	Road open to all vehicles	0.20
31N76B	Road open to highway legal vehicles only	0.10	34N02Y	Road open to all vehicles	0.10
32N05D	Road open to all vehicles	0.06	34N13G	Road open to all vehicles	0.20
32N05XA	Road open to all vehicles	0.09	34N70	Road open to all vehicles	0.33
32N08C	Road open to highway legal vehicles only	0.21	34N73B	Road open to all vehicles	0.09
32N09A1	Road open to all vehicles	0.13	35N08P	Road open to all vehicles	0.25
32N21C	Road open to all vehicles	0.06	35N08P1	Road open to all vehicles	0.02
32N27C	Road open to all vehicles	0.05	35N10G	Road open to all vehicles	0.10
32N29E	Road open to all vehicles	0.20	35N31	Road open to all vehicles	0.10
32N53B	Road open to all vehicles	0.13	35N43A	Road open to all vehicles	0.11
32N60H	Road open to all vehicles	0.18	35N53A	Road open to all vehicles	0.20
32N60YA	Road open to all vehicles	0.20	35N54A	Road open to all vehicles	0.14
32N61YA	Road open to all vehicles	0.10	35N66A	Road open to all vehicles	0.20
32N63YB	Road open to all vehicles	0.16	35N66YC	Road open to all vehicles	0.10
32N64YA	Road open to all vehicles	0.20	35N74A	Road open to all vehicles	0.08
32N64YB	Road open to all vehicles	0.20	36N01C	Road open to all vehicles	0.20
32N65A1	Road open to all vehicles	0.20	36N01K1	Road open to all vehicles	0.10
32N77A	Road open to all vehicles	0.21	53031	Trail open to all vehicles	0.08
32N78YA	Road open to all vehicles	0.09	58004	Trail open to all vehicles	0.05
32N84YA	Road open to all vehicles	0.10	58006	Trail open to all vehicles	0.11
32N91YB	Road open to all vehicles	0.20	58007	Trail open to all vehicles	0.05
32N92YG	Road open to all vehicles	0.13	58010	Trail open to all vehicles	0.26
33N15A	Road open to all vehicles	0.10	58011	Trail open to all vehicles	0.03
33N15C	Road open to all vehicles	0.20	58012	Trail open to all vehicles	0.09
33N21D	Road open to all vehicles	0.10	58013	Trail open to all vehicles	0.06
33N24C	Road open to all vehicles	0.12	58014	Trail open to all vehicles	0.18
33N31YC	Road open to all vehicles	0.18	58015	Trail open to all vehicles	0.02
33N33YA	Road open to all vehicles	0.13	58016	Trail open to all vehicles	0.08
33N34D	Road open to all vehicles	0.20	58017	Trail open to all vehicles	0.05
33N37B	Road open to all vehicles	0.19	58019	Trail open to all vehicles	0.07
33N63C	Road open to all vehicles	0.10	58020	Trail open to all vehicles	0.28
			58024	Trail open to all vehicles	0.11
			58027	Trail open to all vehicles	0.08
			58028	Trail open to all vehicles	0.10
			58029	Trail open to all vehicles	0.10
			58038	Trail open to all vehicles	0.06
			58039	Trail open to all vehicles	0.06
			58041	Trail open to all vehicles	0.08



**Seasonal and Special Vehicle Designations**

Route Number	Legend	Special Vehicle Designation	Dates Allowed	Beginning Mile Post	Ending Mile Post
32N02, 32N06, 32N06C, 32N09, 32N10, 32N10G, 32N21, 32N73, 32N07, 32N31	Roads open to highway legal vehicles only, with Seasonal Designation	Seasonal Designation	04/01-12/25	-	-
32N07, 32N09G, 32N09L, 32N09N, 32N09Y, 32N10M, 32N10N, 32N15, 32N16Y, 32N21C, 32N26, 32N35, 32N40, 32N41, 32N47Y, 32N61, 32N63Y, 32N64Y, 32N69, 32N75, 32N80Y, 32N82Y, 32N97, 32N02B, 32N02H, 32N07, 32N31A, 32N64, 32N64B	Roads open to all vehicles, with Seasonal Designation	Seasonal Designation	04/01-12/25	-	-
58044	Trails open to all vehicles, with Seasonal Designation	Seasonal Designation	05/01-11/30	0.0	0.3